

# PASSI

Estratti al programma d'esame  
Audizione per  
Prima e/o Seconda TROMBA con obbligo della fila

13 settembre 2026

Programma d'esame per prima e/o seconda TROMBA  
con obbligo della fila

A. Honegger, Intrada per tromba e pianoforte

#### Passi orchestrali

Bach, Messa in Si minore

Bizet, Carmen

Mahler, Sinfonia N° 5

Mahler, Sinfonia N° 9

Musorgskij/M. Ravel, Quadri di un'Esposizione

Ravel, Concerto in Sol

Strauss, Il Borghese Gentiluomo

Stravinskij, Petruska

Stravinskij, Pulcinella

Bartok, Concerto per Orchestra (prima e seconda tromba)

Brahms, Sinfonia N°2 (prima e seconda tromba)

Rachmaninov, Rapsodia su un Tema di Paganini (prima e seconda tromba)

Rimskij-Korsakov, Sheherazade (seconda tromba)

Schumann, Sinfonia N°2 (prima e seconda tromba)

Wagner, Crepuscolo degli Dei (terza tromba)

Eventuale lettura a prima vista

Bach — Mass in B Minor  
Trompete I in D.

3

1

Nr. 13. „Credo“ (2.) (Chor).

Allegro. 4/4 5 10 5 15 5 20 5 25 3 Fl. I u. Ob. I. 30 *tranquillo*

35 *f* *mp* *p* *mf* Tempo I.

40 *mf* *f*

45 2 50 55 5 60 4 Fl. I u. Ob. I. 64

65 *ff* *poco rit.* *pp* *tranquillo* 70

*cresc.* 1 75 5 Tr. II. 80 *mf* *cresc.* *ff*

# Carmen

## Vorspiel

Andante moderato  $\text{♩} = \text{ca. } 69$

Georges Bizet

9 II. Trp. in A

*f*

10

*ff*

*dim.*

11

*p* *meno p*

*crescendo* *molto* *ff*

## I. Akt

Marsch und Chor der Gassenjungen

Allegro [  $\text{♩} = \text{ca. } 112$  ]

Trp. in A (auf der Bühne)

*p*

32 I. (im Orchester)

*f*

Gustav Mahler  
Symphony No. 5 in C# Minor

Trompete I.

I.

1. Trauermarsch.

in B. In gemessenem Schritt. Streng. Wie ein Kondukt.

*Solo*  
*p* *sf* *f* *sf*  
*molto* *f* *f* *(triale flüchtig)* *f*  
*ff* *ff* *sempre ff* *ff* *f*  
**1** *Pesante.* **8** **2**  
*ff* *p*

**13** *portamento.*  
*molto in F*  
*molto*  
*Solo*  
*ppp esp.*  
**1** **24** **28**

Mahler — Symphony No. 9 in D Major

6

1. TROMPETE. Tromba in F

36  
Sempre listesso tempo. (♩ = ♩)

9 9  $b^{\flat}$   $ff$  17 2  $f$   $ff$  *offen* *p subito* *poco espressivo*

Etwas gehalten. 12  $pp$

37 *morendo* 10  $p$

Mit großer Empfindung. 38  $pp$  8

# Tableaux d'une Exposition

de M. Moussorgsky

TROMBE I II  
en Ut

Orchestration de  
Maurice RAVEL

## Promenade

Allegro guisto, nel modo russo; senza allegrezza, ma poco sostenuto.

*f*

①

②

③

④

⑤

*f*

# VI. Samuel Goldenberg und Schmuyle

56 *Andante* *f* 57 *tutti*

(con sord.)

58 *ff* sord.

59

60

61

62

*ff* *f* *orssc.*

2 *ff*

Detailed description of the musical score: The score is for a piano piece in 3/4 time. It begins at measure 56 with a tempo marking of 'Andante' and a dynamic of 'f'. A performance instruction '(con sord.)' is written below the staff. Measure 57 is marked 'tutti' and features a melodic line with a fermata. Measure 58 starts with a piano introduction marked 'ff sord.' and consists of a dense, rhythmic accompaniment. Measures 59 and 60 continue this accompaniment with some melodic variation. Measure 61 is marked 'ff' and features a more active piano accompaniment. Measure 62 is marked 'f' and includes the instruction 'orssc.' (ossia). The score concludes with a double bar line and a final measure marked '2' and 'ff'.

PROPRIETA  
ORCHESTRA HAYDN  
BOLZANO

# CONCERTO

TROMBA Tromba in C

MAURICE RAVEL

I

Allegramente **1**  
15 Clar. Fl. TROMBA Sord. *mf*

senza Sord. **2**

**3** **2**

**4**<sup>th</sup>

**34** TROMBA *f*

**35** *Piano*

**36** TROMBA *f* *ff*

STRAUSS  
II Borghese Gentiluomo

№ 3. Der Fechtmeister.

in B  
Ziemlich lebhaft. (*animato assai*) Metr. J. 72

*colla parte*

*dim.* *p.*

38 8 37 2

I. Stravinsky Petruska

Tromba in Si b

con sord. 3 **133** 4 Solo **134** Allegro, ♩=116 Solo

*p marc.* *marc. p* *senza sord. mf* *mf*

**135** *p* *mf*

**136** *p* *mf*

**137**

**138**

**139** *Lo stesso tempo* *Poco meno mosso* *poco rall.*

2 1 1 1

Detailed description: This is a page of a musical score for a Tromba in Si b. It contains five staves of music. The first staff has a treble clef and a key signature of one sharp (F#). It starts with the instruction 'con sord.' and a '3' above the staff. Measure 133 is marked with a box. The music continues with 'marc. p' and 'marc.' above the staff. Measure 134 is marked with a box and 'Solo' above it. The tempo is 'Allegro, ♩=116' and 'Solo' is written again. The dynamic is 'mf'. The second staff has a treble clef and a key signature of one sharp. It starts with measure 135, marked with a box, and has a dynamic of 'p'. The third staff has a treble clef and a key signature of one sharp, starting with measure 136, marked with a box, and a dynamic of 'p'. The fourth staff has a treble clef and a key signature of one sharp, starting with measure 137, marked with a box. The fifth staff has a treble clef and a key signature of one sharp, starting with measure 138, marked with a box. Measure 139 is marked with a box and has the instruction 'Lo stesso tempo' above it. The music then changes to 'Poco meno mosso' and 'poco rall.' above the staff. The dynamics are '2', '1', '1', and '1' below the staff.

STRAVINSKI,  
Pulcinella

Tromba in C

5. Toccata

65 Allegro,  $\text{♩} = 120$   
Sola  
*mf*

66

67 *tr*

68 *p* *mf*

69 4 3 VI. I, solo

70

71 Sola *mf*

72 *f*

8b. Finale

102 Allegro assai,  $\text{♩} = 144$

Musical score for Trumpet in C, 8b. Finale, measures 102-118. The score is written in 2/4 time with a tempo of Allegro assai (♩ = 144). It consists of ten staves of music. Measure numbers 102 through 118 are boxed. Dynamics include *ff*, *mf*, *f*, *poco sf*, *sub. p*, and *sim.*. Performance markings include *ta*, *Bsn 1*, and *Solo*. Rehearsal marks are indicated by numbers 2, 3, 8, 10, and 7. The score ends with a double bar line at measure 118.

# CONCERTO FOR ORCHESTRA

## I. INTRODUZIONE

Béla Bartók

Andante non troppo

String.

tornando al Tempo

11 12 1 9 22 1 3 4 30

35 1

Vla. pp

44

## FINALE

201 Tempo I. (Presto)

TACET

etc. 3

2nd Trpt.

201 Tempo I. (Presto)

TACET etc. 3 2nd Trpt.

211

221 7 231 2

238 f pld f

244

249 ff

Poco meno mosso

1 256 1 TACET

2nd TRUMPET in C

# CONCERTO FOR ORCHESTRA

## I. INTRODUZIONE

Béla Bartók

Andante non troppo String. - - - - - tornando al Tempo I

11 12 1 9 22 1 3 4 30 1st Fl.

35 1

44 Cym.

51 1 6 58 1 2

dim.

196 MAIN USE KEY al Tempo I (Presto)

7 1st Vln.

201

211 1st Trpt.

221

231 2 più f più f

238 244 ff 249 ff

1

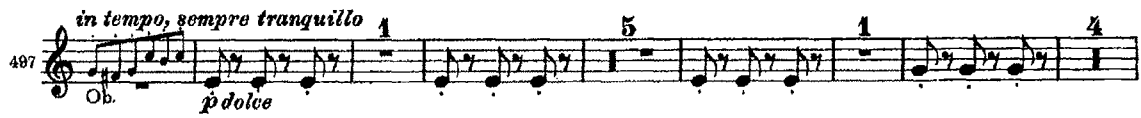
Brahms — Symphony No. 2 in D Major

In RE

Trompette I

281   
Viol. I *ff* *p* *cresc.* Solo

292   
*f* *sf*

497   
Ob. *p dolce* 1 5 1 2

513   
*mp* *p* 1 2 3 4 5

Brahms 2 (Tromba 2)

P

The image shows a musical score for the Tromba 2 part of Brahms' 2nd Symphony. It consists of four staves of music. The first staff is a short excerpt starting with a *p cresc.* marking and ending with a *f* dynamic. The second staff, starting at measure 388, features a *sf* dynamic and a sixteenth-note triplet marked with a '6'. The third staff, starting at measure 406, contains a continuous sixteenth-note pattern. The fourth staff, starting at measure 418, features a *ff* dynamic and continues the sixteenth-note texture. The score concludes with a double bar line at measure 422.

S. Rachmaninoff Rhapsody on a Theme of Paganini

minuetto

450 **34** 8 **35** 6 **VAR. XIV** L'istesso tempo **5**

Hus 1&3 *f* *sf*

77 **36** *f* *cresc.*

485 **37** *mf* *f*

492 **38** *cresc.* *ff*

499 **39** **VAR. XV** Più vivo. Scherzando **22** **1** **4**

*mf* (solo Pno.)

Rimsky-Korsakov — Scheherazade, Op. 35

**Tromba II.**

2

*IN Sib*

The musical score for Tromba II consists of four staves of music. The first staff begins with a dynamic marking of *f* and includes a *cresc.* marking. The second staff features a *p* dynamic marking. The third staff contains a *mf* dynamic marking. The fourth staff is marked *Recit. Moderato assai.* and includes a *rit.* marking and the instruction *ad lib.* at the end of the line.

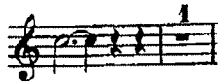
Robert Schumann  
Symphony No. 2 in C Major, Op. 61

1

Trumpet I

in C.  
(Original Notation)  
Sostenuto assai.  $\text{♩} = 76.$

Solo.



Robert Schumann  
Symphony No. 2 in C Major, Op. 61

1

Trompete II

*In C*  
*Sostenuto assai* ♩ = 78

pp

5

*p poco cresc.*

*dim.*

1

2

Tromba III.

II. Aufzug.

I. SCENE.

Moderato molto.

Fagotti.

Flauti.

10

in F.

*mf*

*dim.*

*p*

*dolce*

*p*

*poco a poco più lento.*

*p*

*ppp*

*pp*

*acet.*